

The
Residence

- at -

Cinnamon

Life

LIFESTYLE



The Residence

- at -

Cinnamon

Life

Location at Cinnamon Life



Disclaimer:

This docket contains purely conceptual illustrations of the end product, which may vary in design, style, colour, material or layout from the depictions in this docket.

All plans, internal layouts, information and specifications are subject to change and shall not form part of an offer or contract.

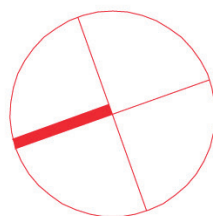
The Developer reserves the right to modify any part or parts of the building prior to completion.

Nothing herein contained nor anything omitted here from may be construed as being a material representation resulting in legal liability to the Developer in any manner whatsoever.

The Residence

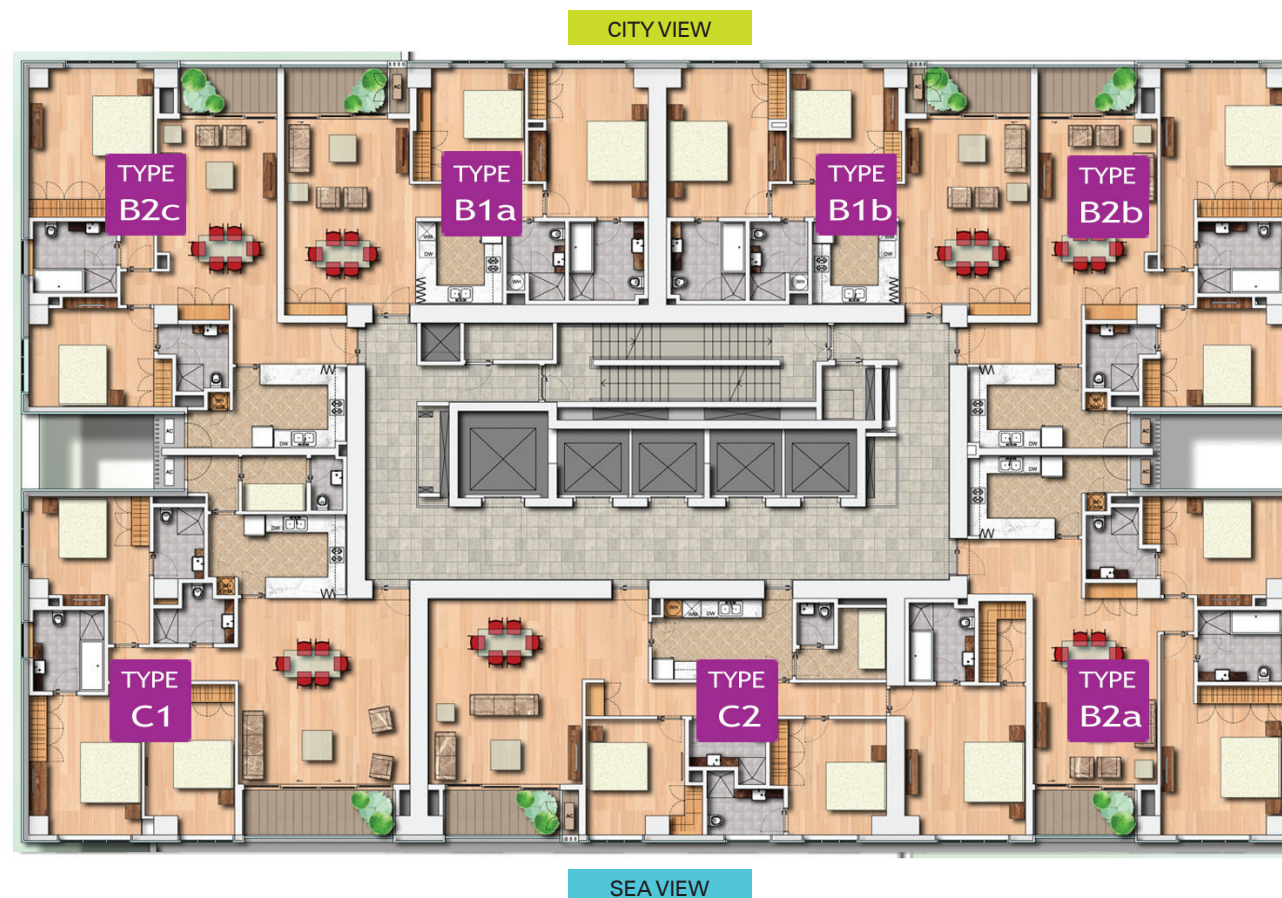
- at -

Cinnamon



Floor Layout

Levels 8 - 37 (2 BR & 3 BR)



TYPE B1a 1130 sq.ft

TYPE B1b 1130 sq.ft

TYPE B2a 1238 sq.ft

TYPE B2b 1238 sq.ft

TYPE B2c 1238 sq.ft

TYPE C1 1649 sq.ft

TYPE C2 1807 sq.ft

Disclaimer:

This docket contains purely conceptual illustrations of the end product, which may vary in design, style, colour, material or layout from the depictions in this docket.

All plans, internal layouts, information and specifications are subject to change and shall not form part of an offer or contract.

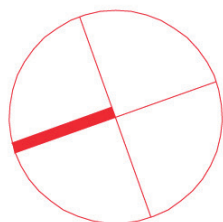
The Developer reserves the right to modify any part or parts of the building prior to completion.

Nothing herein contained nor anything omitted here from may be construed as being a material representation resulting in legal liability to the Developer in any manner whatsoever.

The Residence

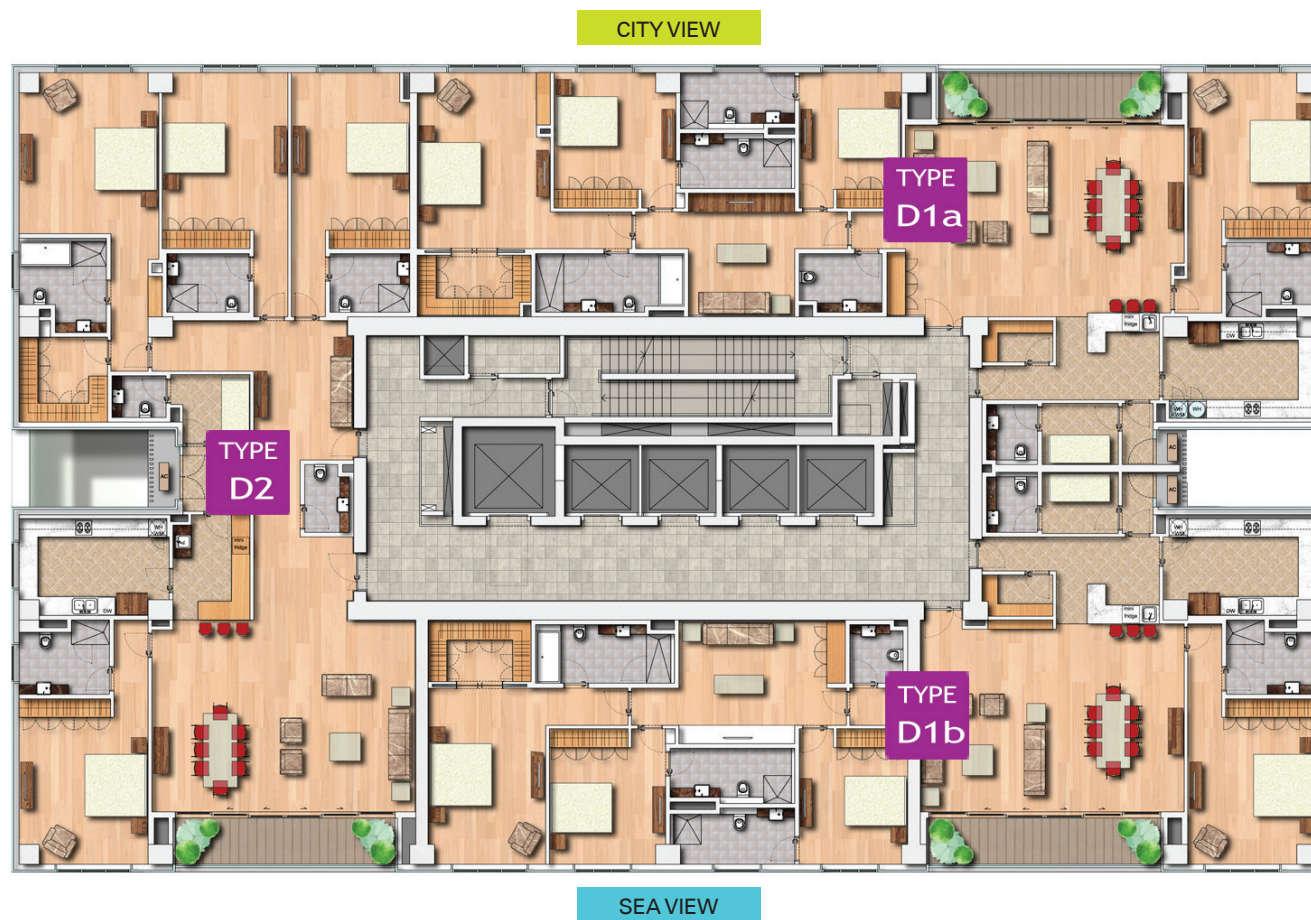
- at -

Cinnamon



Floor Layout

Levels 38 - 42 (4 BR)



TYPE D1a 3085 sq.ft

TYPE D1b 3085 sq.ft

TYPE D2 3291 sq.ft

Disclaimer:

This docket contains purely conceptual illustrations of the end product, which may vary in design, style, colour, material or layout from the depictions in this docket.

All plans, internal layouts, information and specifications are subject to change and shall not form part of an offer or contract.

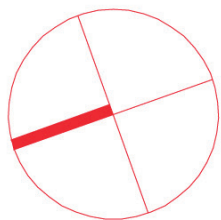
The Developer reserves the right to modify any part or parts of the building prior to completion.

Nothing herein contained nor anything omitted here from may be construed as being a material representation resulting in legal liability to the Developer in any manner whatsoever.

The Residence

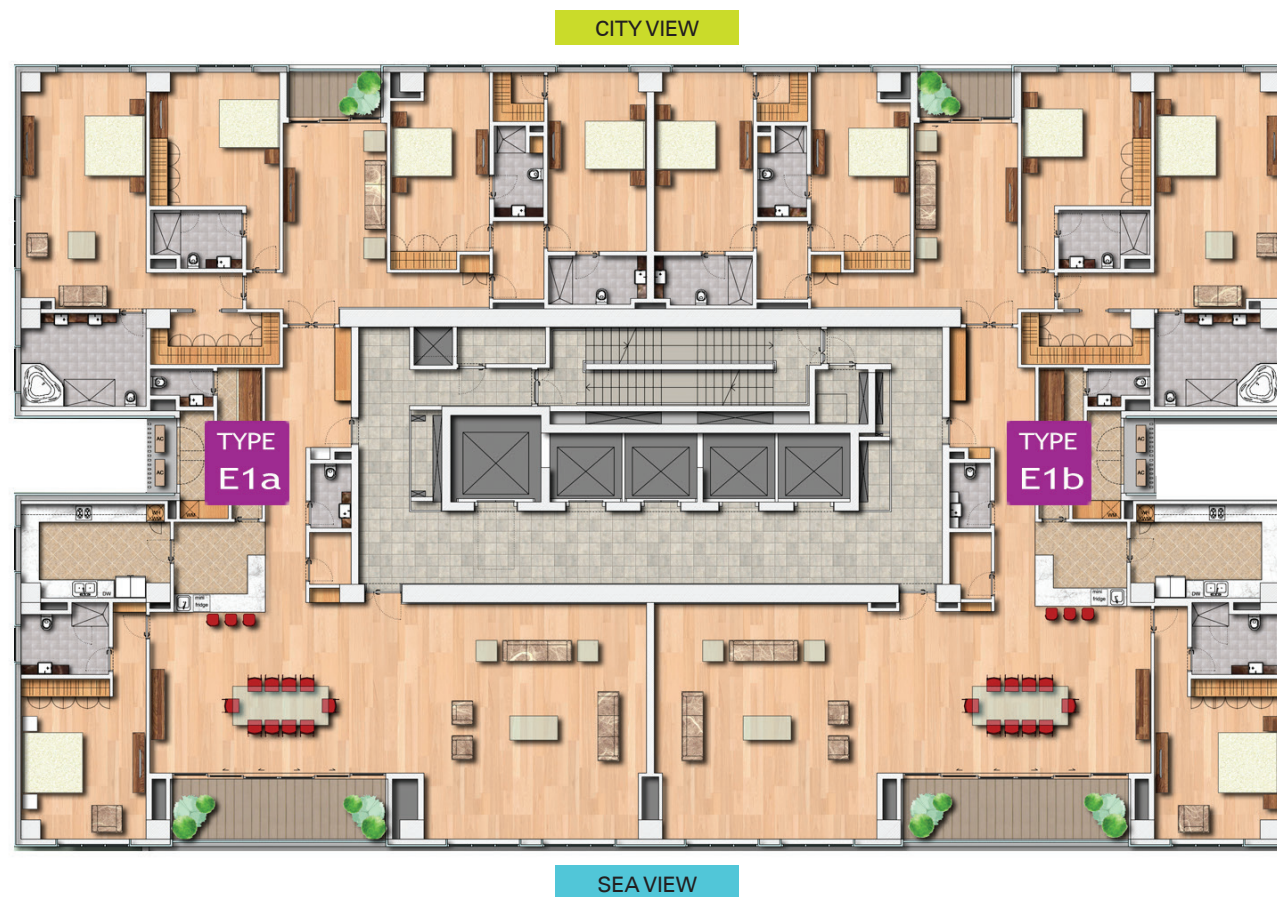
- at -

Cinnamon



Floor Layout

Levels 43 - 45 (5 BR)



TYPE E1a 4722 sq.ft

TYPE E1b 4722 sq.ft

Disclaimer:

This docket contains purely conceptual illustrations of the end product, which may vary in design, style, colour, material or layout from the depictions in this docket.

All plans, internal layouts, information and specifications are subject to change and shall not form part of an offer or contract.

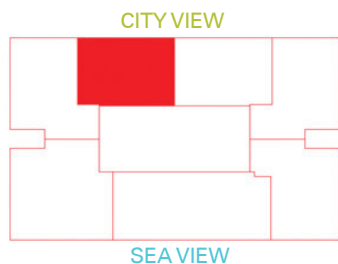
The Developer reserves the right to modify any part or parts of the building prior to completion.

Nothing herein contained nor anything omitted here from may be construed as being a material representation resulting in legal liability to the Developer in any manner whatsoever.

The Residence

- at -

Cinnamon



Type B1a

2 BR Unit (1130 sq.ft)



Disclaimer:

This docket contains purely conceptual illustrations of the end product, which may vary in design, style, colour, material or layout from the depictions in this docket.

All plans, internal layouts, information and specifications are subject to change and shall not form part of an offer or contract.

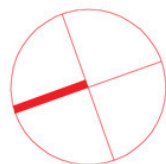
The Developer reserves the right to modify any part or parts of the building prior to completion.

Nothing herein contained nor anything omitted here from may be construed as being a material representation resulting in legal liability to the Developer in any manner whatsoever.

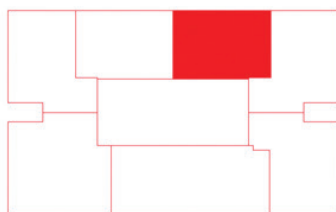
The Residence

- at -

Cinnamon



CITY VIEW



SEA VIEW

Type B1b

2 BR Unit (1130 sq.ft)



Disclaimer:

This docket contains purely conceptual illustrations of the end product, which may vary in design, style, colour, material or layout from the depictions in this docket.

All plans, internal layouts, information and specifications are subject to change and shall not form part of an offer or contract.

The Developer reserves the right to modify any part or parts of the building prior to completion.

Nothing herein contained nor anything omitted here from may be construed as being a material representation resulting in legal liability to the Developer in any manner whatsoever.

The Residence

- at -

Cinnamon

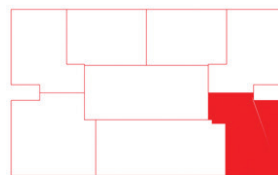


Type B2a

2 BR Unit (1238 sq.ft)



CITY VIEW



SEA VIEW

Disclaimer:

This docket contains purely conceptual illustrations of the end product, which may vary in design, style, colour, material or layout from the depictions in this docket.

All plans, internal layouts, information and specifications are subject to change and shall not form part of an offer or contract.

The Developer reserves the right to modify any part or parts of the building prior to completion.

Nothing herein contained nor anything omitted here from may be construed as being a material representation resulting in legal liability to the Developer in any manner whatsoever.

The Residence

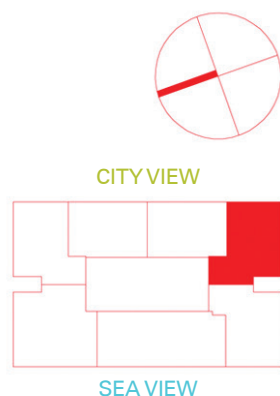
- at -

Cinnamon



Type B2b

2 BR Unit (1238 sq.ft)



Disclaimer:

This docket contains purely conceptual illustrations of the end product, which may vary in design, style, colour, material or layout from the depictions in this docket.

All plans, internal layouts, information and specifications are subject to change and shall not form part of an offer or contract.

The Developer reserves the right to modify any part or parts of the building prior to completion.

Nothing herein contained nor anything omitted here from may be construed as being a material representation resulting in legal liability to the Developer in any manner whatsoever.

The Residence

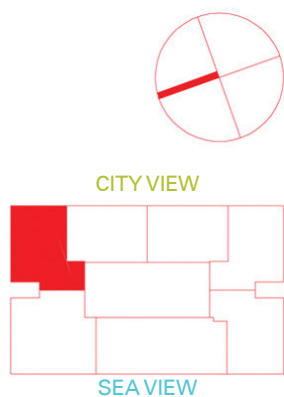
- at -

Cinnamon



Type B2c

2 BR Unit (1238 sq.ft)



Disclaimer:

This docket contains purely conceptual illustrations of the end product, which may vary in design, style, colour, material or layout from the depictions in this docket.

All plans, internal layouts, information and specifications are subject to change and shall not form part of an offer or contract.

The Developer reserves the right to modify any part or parts of the building prior to completion.

Nothing herein contained nor anything omitted here from may be construed as being a material representation resulting in legal liability to the Developer in any manner whatsoever.

The Residence

- at -

Cinnamon

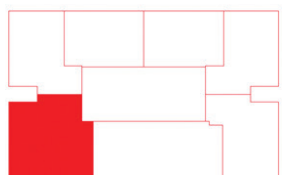


Type C1

3 BR Unit (1649 sq.ft)



CITY VIEW



SEA VIEW

Disclaimer:

This docket contains purely conceptual illustrations of the end product, which may vary in design, style, colour, material or layout from the depictions in this docket.

All plans, internal layouts, information and specifications are subject to change and shall not form part of an offer or contract.

The Developer reserves the right to modify any part or parts of the building prior to completion.

Nothing herein contained nor anything omitted here from may be construed as being a material representation resulting in legal liability to the Developer in any manner whatsoever.

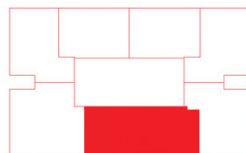
The Residence

- at -

Cinnamon



CITY VIEW



SEA VIEW

Type C2

3 BR Unit (1807 sq.ft)



Disclaimer:

This docket contains purely conceptual illustrations of the end product, which may vary in design, style, colour, material or layout from the depictions in this docket.

All plans, internal layouts, information and specifications are subject to change and shall not form part of an offer or contract.

The Developer reserves the right to modify any part or parts of the building prior to completion.

Nothing herein contained nor anything omitted here from may be construed as being a material representation resulting in legal liability to the Developer in any manner whatsoever.

The Residence

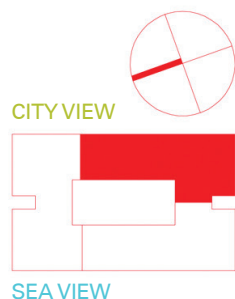
- at -

Cinnamon



Type D1a

4 BR Unit (3085 sq.ft)



Disclaimer:

This docket contains purely conceptual illustrations of the end product, which may vary in design, style, colour, material or layout from the depictions in this docket.

All plans, internal layouts, information and specifications are subject to change and shall not form part of an offer or contract.

The Developer reserves the right to modify any part or parts of the building prior to completion.

Nothing herein contained nor anything omitted here from may be construed as being a material representation resulting in legal liability to the Developer in any manner whatsoever.

The Residence

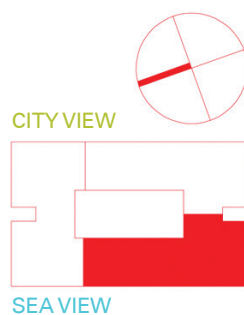
- at -

Cinnamon



Type D1b

4 BR Unit (3085 sq.ft)



Disclaimer:

This docket contains purely conceptual illustrations of the end product, which may vary in design, style, colour, material or layout from the depictions in this docket.

All plans, internal layouts, information and specifications are subject to change and shall not form part of an offer or contract.

The Developer reserves the right to modify any part or parts of the building prior to completion.

Nothing herein contained nor anything omitted here from may be construed as being a material representation resulting in legal liability to the Developer in any manner whatsoever.

The Residence

- at -

Cinnamon



Type D2

4 BR Unit (3291 sq.ft)



CITY VIEW

SEA VIEW

Disclaimer:

This docket contains purely conceptual illustrations of the end product, which may vary in design, style, colour, material or layout from the depictions in this docket.

All plans, internal layouts, information and specifications are subject to change and shall not form part of an offer or contract.

The Developer reserves the right to modify any part or parts of the building prior to completion.

Nothing herein contained nor anything omitted here from may be construed as being a material representation resulting in legal liability to the Developer in any manner whatsoever.

The Residence

- at -

Cinnamon



Type E1a

5 BR Unit (4722 sq.ft)



CITY VIEW



SEA VIEW



Disclaimer:

This docket contains purely conceptual illustrations of the end product, which may vary in design, style, colour, material or layout from the depictions in this docket.

All plans, internal layouts, information and specifications are subject to change and shall not form part of an offer or contract.

The Developer reserves the right to modify any part or parts of the building prior to completion.

Nothing herein contained nor anything omitted here from may be construed as being a material representation resulting in legal liability to the Developer in any manner whatsoever.

The Residence

- at -

Cinnamon



Type E1b

5 BR Unit (4722 sq.ft)



CITY VIEW



SEA VIEW

Disclaimer:

This docket contains purely conceptual illustrations of the end product, which may vary in design, style, colour, material or layout from the depictions in this docket.

All plans, internal layouts, information and specifications are subject to change and shall not form part of an offer or contract.

The Developer reserves the right to modify any part or parts of the building prior to completion.

Nothing herein contained nor anything omitted here from may be construed as being a material representation resulting in legal liability to the Developer in any manner whatsoever.

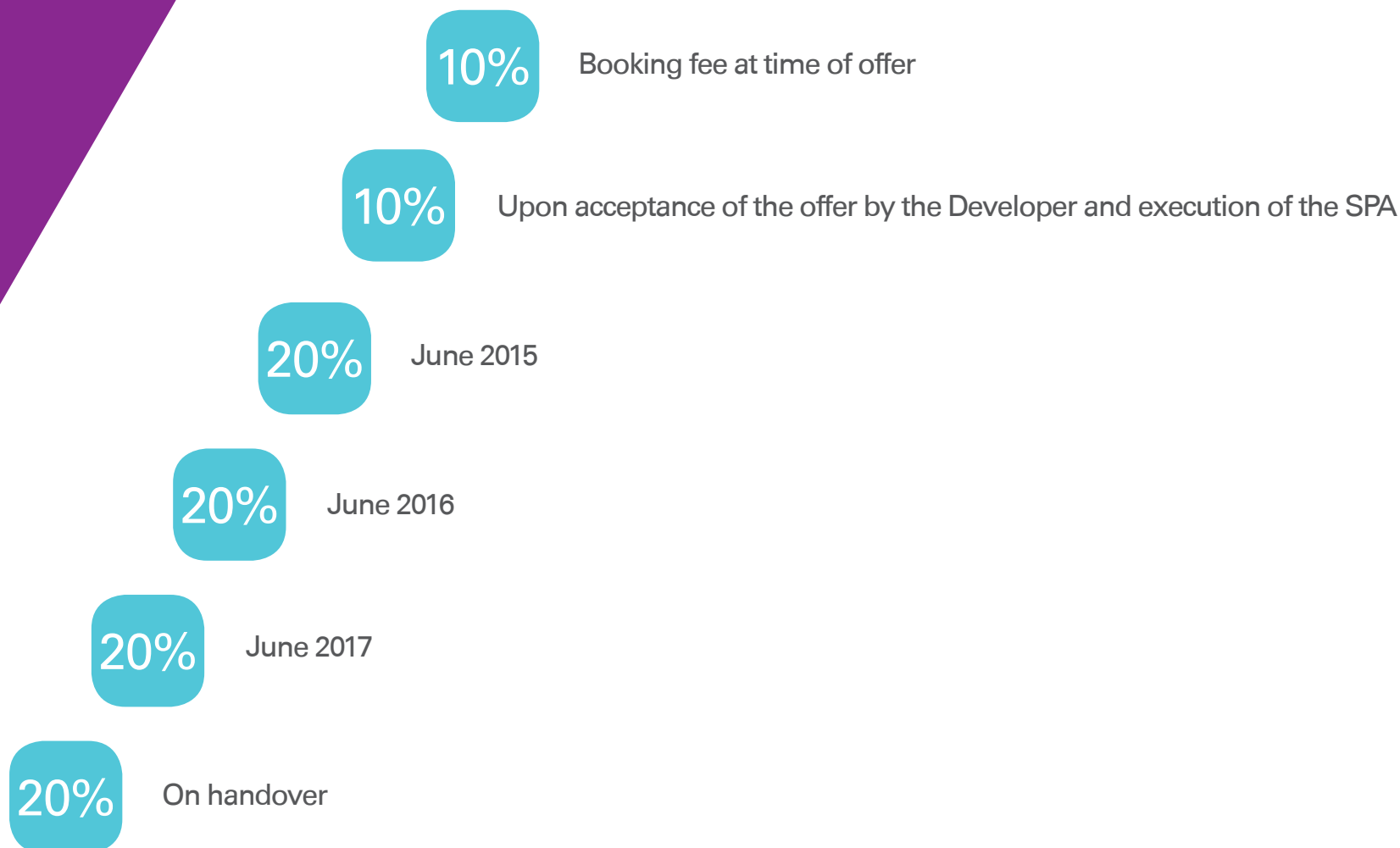
The Residence

- at -

Cinnamon



Payment Schedule



Disclaimer:

This docket contains purely conceptual illustrations of the end product, which may vary in design, style, colour, material or layout from the depictions in this docket.

All plans, internal layouts, information and specifications are subject to change and shall not form part of an offer or contract.

The Developer reserves the right to modify any part or parts of the building prior to completion.

Nothing herein contained nor anything omitted here from may be construed as being a material representation resulting in legal liability to the Developer in any manner whatsoever.

The Residence

- at _____

Cinnamon



- 45 storey building
 - 2 basements and 6 levels of car parks, 1 level consisting of common area, 38 levels of residential floors and rooftop recreational area
 - Building Management System
 - MATV
 - Landscaping on podium and rooftop
 - Swimming pool
 - Gymnasium
 - Multi-purpose function rooms
 - Steam and sauna room
 - Stand by power
 - PA system
- Typical Apartment
 - Air conditioning for living/dining area and bedrooms
 - Pantry cupboards
 - Utility room (available in 3 BR, 4 BR and 5 BR units)
 - Floors > Kitchen - porcelain tiles
 - > Toilets - porcelain tiles
 - > Living/dining and bedrooms – timber finish/stone finish
 - Doors: engineered timber with solid core and veneer finish
 - Aluminum double glazed windows and sliding doors
 - Central gas system
 - Hot water system
 - Wardrobes in bedrooms

Disclaimer:

This docket contains purely conceptual illustrations of the end product, which may vary in design, style, colour, material or layout from the depictions in this docket.

All plans, internal layouts, information and specifications are subject to change and shall not form part of an offer or contract.

The Developer reserves the right to modify any part or parts of the building prior to completion.

Nothing herein contained nor anything omitted here from may be construed as being a material representation resulting in legal liability to the Developer in any manner whatsoever.

